

Dual Immersion Frequently Asked Questions

1. **How will students be selected for dual immersion classes?** Placement in the program will be done through a lottery process.

2. **Will the program be open to students of all ability levels?**

Applications are open to all students entering first grade. Except at Midvale Elementary, where students who live within the school boundaries are able to enter the DLI program in Kindergarten.

The dual immersion program is a general education program that seeks to enroll students of varying backgrounds and all abilities. Students of all levels are capable of acquiring a second language. However, it may not be a wise choice for children experiencing significant communication delays in their primary language.

3. **Is dual immersion a gifted education program?**

No, students of all abilities are encouraged to apply.

4. **When can students enter the dual immersion program?**

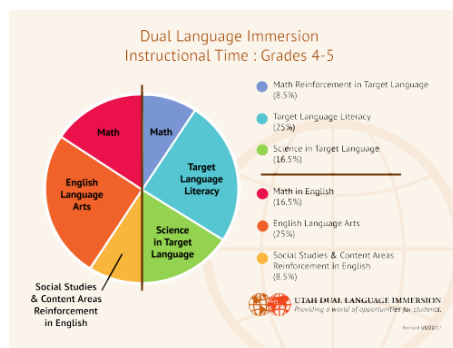
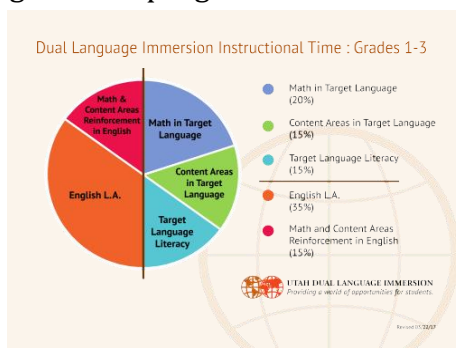
In an effort to avoid the academic risks of late entry into the program, students without target language proficiency will only be permitted to enter the program as follows should there be opening in the requested program:

- **Chinese:** students may enter the program until the first day of second grade. Students must be present to START second grade.
- **French/Spanish:** students may enter the program until the first day after Winter break of second grade. Students must be present to START the first day after Winter Break.

Consequently, students who demonstrate proficiency in the target language will be considered at any grade.

5. **How is instructional time distributed between English and the target language?**

The student's daily instruction will be divided half in English and half in the target language. Target language literacy instruction will occur in all grades. Instruction of other subjects in the target language, such as mathematics, science and social studies varies from grade to grade throughout the program.



Dual Immersion Frequently Asked Questions

6. *How will parents help with homework in the target language?*

Only tasks that the student can complete independently will be assigned as homework in the target language. This is best practice for all homework assignment regardless of the language.

7. *Can siblings be in the program together?*

Siblings will be given preference for participation in the dual immersion program to encourage the use of the target language in the home. Additionally, twins will be accommodated as well.

However, younger siblings must submit an application within the open lottery window in order to be given preferential placement into the program.

8. *Can parents/guardians volunteer in the classroom?*

Parents/guardians who are proficient in the target language will be encouraged to volunteer in the target language classroom. Whereas, parents who are only speakers of English will be encouraged to provide support in the English classroom.

9. *Will my student be expected to participate in the dual immersion program through sixth grade?*

In order to fully benefit from the dual immersion program, we expect that students will commit to the full 12 years of cohesive target language instruction (i.e. first through twelfth grade).

10. *Why are French, Chinese, and Spanish the dual immersion target languages?*

The Utah Legislature and the federal government identified the selected languages (i.e. French, Chinese, and Spanish) as languages that are significant domestically and internationally.